



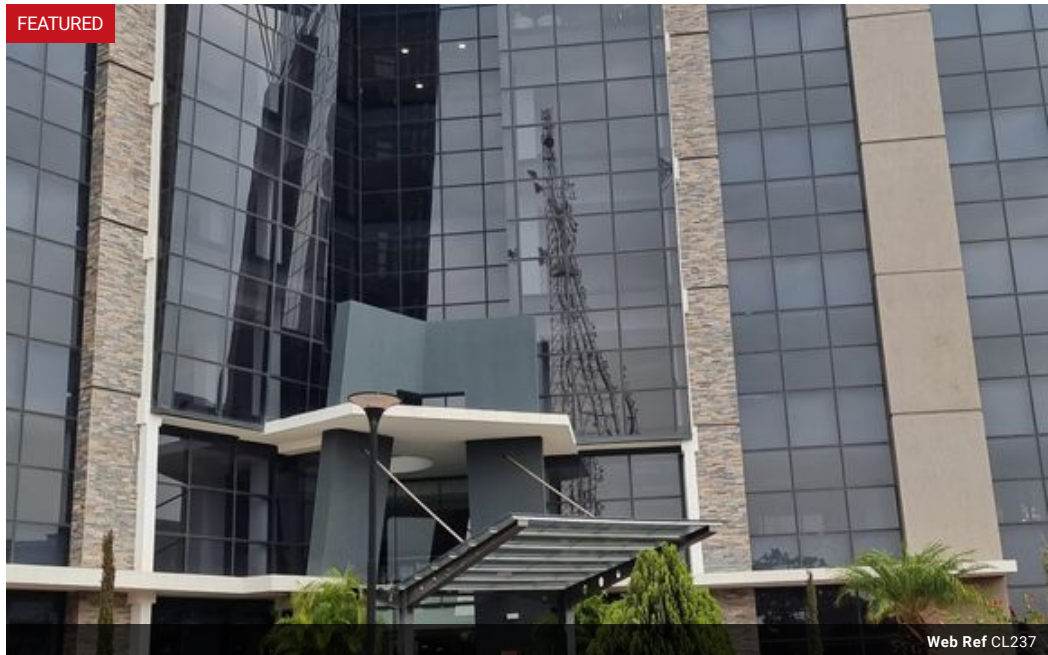
Elvira Brentnall  
+260968 336061  
elvira@seeff.com

Contact Lusaka

+260 954152925

Foxdale Court 114  
1st Floor, Second Building  
609 Zambezi Road  
Roma  
Lusaka  
10101

FEATURED



Web Ref CL237



## POA

0 0

## 9,400m<sup>2</sup> Business Centre For Sale in Longacres

Available now:

Business Centre - A star shaped building with four wings - 8 floors.

Each wing being either 250 or 300 square metres.  
Each floor's four wings total 1100 sqm of lettable space.  
Top floor has 600 sqm.

Great modern eco-friendly design, A-grade with state of the art finishes, elevators & security system.

Superb Parking with Basement & Surface parking bays with about 450 slots in total giving about 50 bays per floor and 50 for visitors.

Some details on The Building :

LED Eco lighting

## Features

**Zoning** Commercial

### Sizes

Floor Size 9,400m<sup>2</sup>  
Land Size 11,600m<sup>2</sup>

### Extras

Security Water Tanks Lifts Guard House Extractor Fan Borehole Lobby in Building Central A/C & Heating 24 Hour Access Boomed Area Intercom