

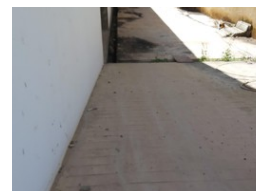


Mwila Nakazwe
+260 973251706
mwila@seeff.com

Contact Lusaka

+260 954152925

Foxdale Court 114
1st Floor, Second Building
609 Zambezi Road
Roma
Lusaka
10101



POA

0 0

Incomplete 3 Storey Commercial Building For Sale In Woodlands

Located in a sought after area, close proximity to amenities and embassies. This is a 3 storey incomplete commercial building (Medical Centre) on 0.5777 acre (2333.908sqm) plot with underground parking, access to electricity, council and borehole water.

Floor Measurements

Basement- 1026 sqm

Ground Floor-791 sqm

First Floor-909 sqm

Second Floor- 909 sqm

Features

Title Leasehold
Zoning Commercial

Sizes
Floor Size 3,635m²
Land Size 2,333m²