



**Tina Mudenda**  
+260967350738  
tina.mudenda@seeff.com

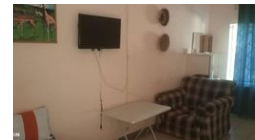
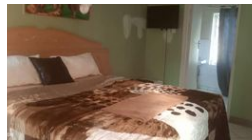
Contact Lusaka

+260 954152925

Foxdale Court 114  
1st Floor, Second Building  
609 Zambezi Road  
Roma  
Lusaka  
10101



Web Ref CL274



**ZMW-0.1 per m<sup>2</sup>** Gross Monthly Rental ZMW35,000 Excl. VAT

0 0

## GUEST HOUSE FOR RENT IN CHILILABOMBWE

This a guesthouse comprising of 18 guest rooms, a kitchen, dining area, events arena, bar, pump house, cottage and guard house

### Features

**Zoning** Commercial

**Sizes**

Floor Size -1m<sup>2</sup>

**Extras**

Covered Parking Pets Allowed