

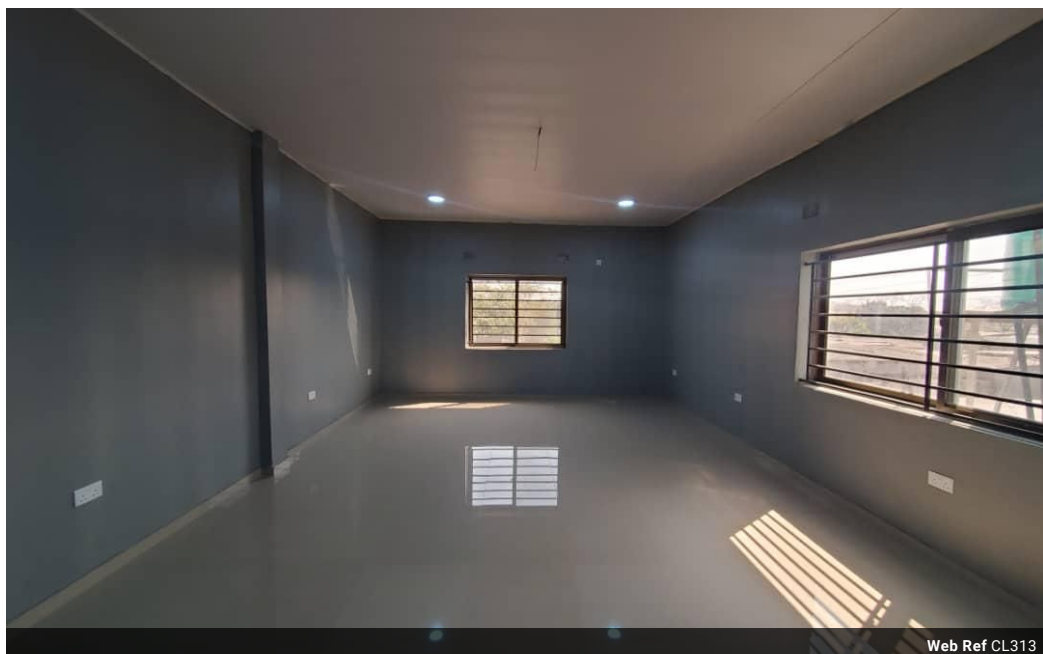


**Mukeya Ngosa**  
0974156625  
mukeya.ngosa@seeff.com

Contact **Lusaka**

+260 954152925

Foxdale Court 114  
1st Floor, Second Building  
609 Zambezi Road  
Roma  
Lusaka  
10101



**ZMW10 per m<sup>2</sup>**

**Gross Monthly Rental ZMW13,000 Excl. VAT**

0 0

### 40m<sup>2</sup> Business Centre To Let in Northmead

Office Space to let in Northmead Area along Machichi Road, Near Manda Hill Shopping Mall.

Available offices include:  
ZMW13, 000.00 office space; and  
ZMW6, 000.00 office space

These are new modern office space ideal for corporate business of small to medium size. Comes with sufficient secured parking space.

### Features

**Zoning** Commercial

**Sizes**  
Floor Size 40m<sup>2</sup>