



Kelvin Mwansa
+260 969 627 085
kelvin.mwansa@seeff.com

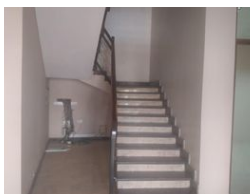
Contact **Lusaka**

+260 954152925

Foxdale Court 114
1st Floor, Second Building
609 Zambezi Road
Roma
Lusaka
10101



Web Ref CL182



ZMW200 per m²

Gross Monthly Rental ZMW100,000 Excl. VAT

0 0

560sqm double storey Office space in Rhodespark

This is a double storey office space. The building has a total lettable space of 560sqm totaling 16 office cubicles. 8 offices on the ground floor and 8 offices on the first floor.

T

The office is well located in Rhodespark Close to the central business district of Lusaka with a number of amenities surrounding the office spaces

Asking rent: \$12/sqm

Features

Zoning Commercial

Sizes

Floor Size 560m²