



Alick Phiri
0763549295
alick.phiri@seeff.com



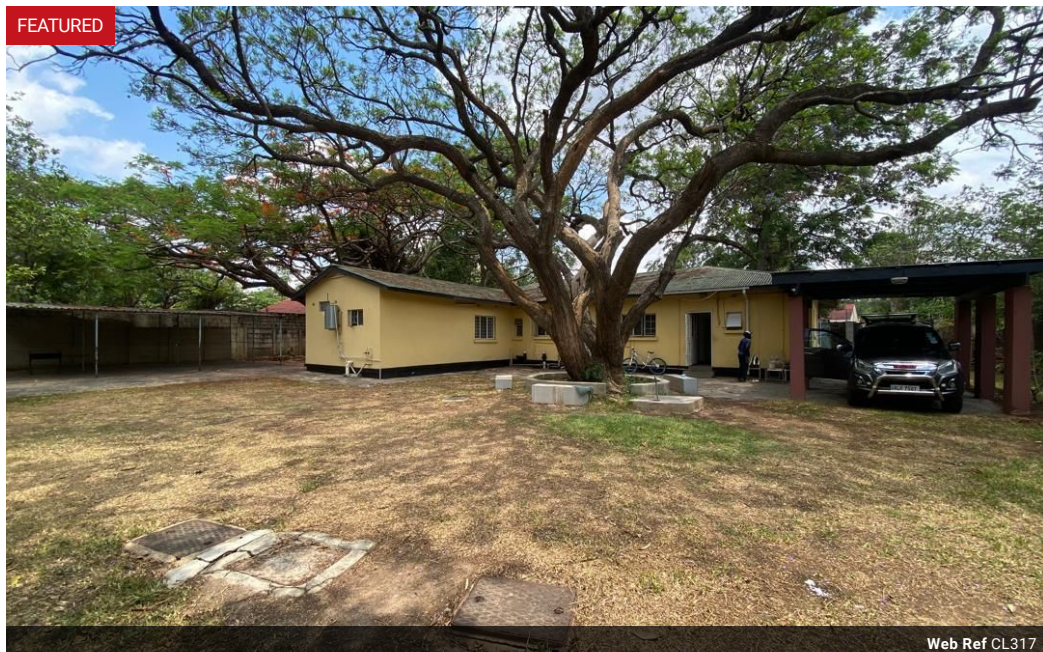
Bryan Mushota Tembo
+260966767405

bryan.mushota@seeff.com

Contact **Lusaka**

+260 954152925

Foxdale Court 114
1st Floor, Second Building
609 Zambezi Road
Roma
Lusaka
10101



POA

0 0

3 bedroom standalone house in Rhodespark

This is a 3 bedroom standalone house located in Rhodespark. Other improvements include an spacious room previously used as a classroom for kids with own ablution area and a servants quarter.

The house has recently been repainted and on the market for commercial use only.

The land size is 2,452 with lots of room for parking and any other needed developments on the premises.

Ideal for use such as a clinic, nursery/baby school, offices, massage parlor etc

Located just 200m off Bwinjimfumu road and 400m off Great East Road, the premises offer an opportunity for various commercial uses.

Asking Rentals: USD1,700

Features

Zoning Commercial

Sizes

Floor Size 400m²