



**Alick Phiri**  
0763549295  
alick.phiri@seeff.com



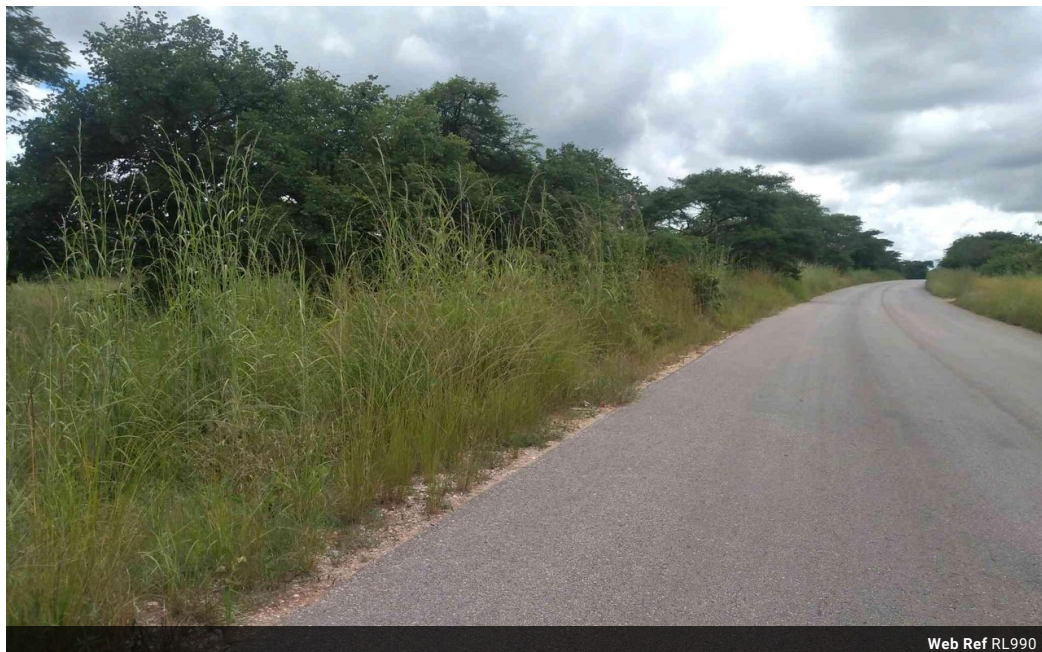
**Kelvin Mwansa**  
+260 969 627 085

kelvin.mwansa@seeff.com

Contact **Lusaka**

**+260 954152925**

Foxdale Court 114  
1st Floor, Second Building  
609 Zambezi Road  
Roma  
Lusaka  
10101



Web Ref RL990



## POA

0 0

### Small Holding for sale along palabana Road

These are two vacant lands next to each other on palabana Road. Both have road frontage and are 27 and 18 Hectares respectively. Being sold as a whole or subdivision of at least 5 acres each.

Selling rate: K250,000 per acre

Call for viewing arrangements

## Features

### Exterior

Pool No