

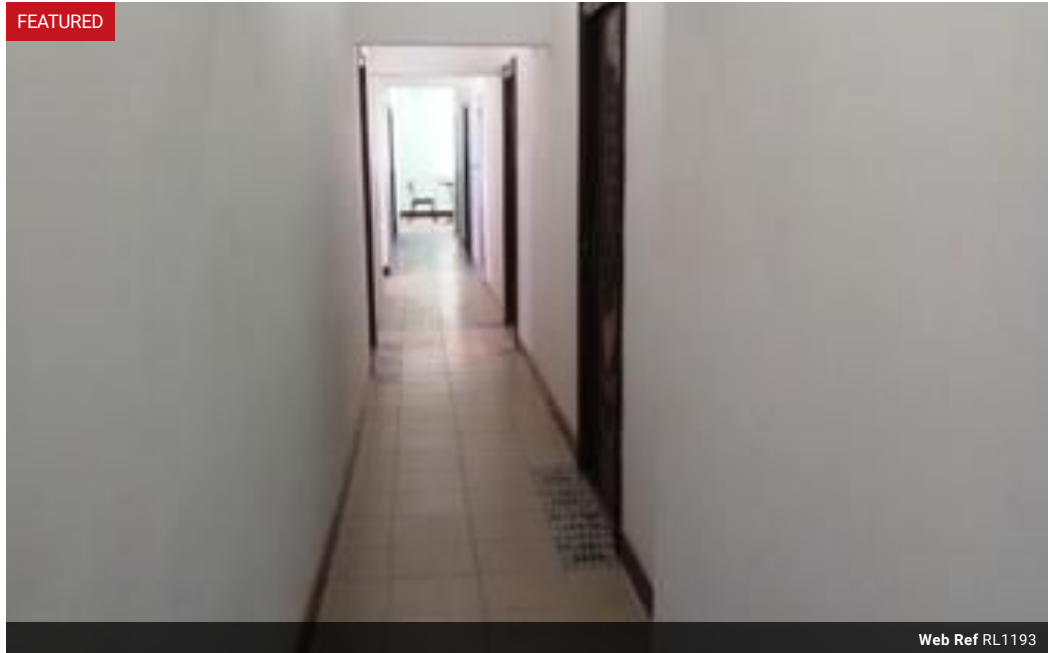


Mwila Sheila Mulundika
 +260979459259
 mwila.mulundika@seeff.com

Contact **Lusaka**
+260 954152925

Foxdale Court 114
 1st Floor, Second Building
 609 Zambezi Road
 Roma
 Lusaka
 10101

FEATURED



Web Ref RL1193



ZMW11,900,000

Monthly Bond Repayment ZMW122,830.42
 Calculated over 20 years at 11% with no deposit.

Transfer Costs ZMW1,201,289.00 **Bond Costs** ZMW94,285.00

These calculations are only a guide. Please ask your conveyancer for exact calculations.



LODGE FOR SALE

The Lodge is situated in a good area of Kitwe on a 2,768 plot surrounded by a wall fence and approximately 5mins drive from Kitwe CBD. The property includes the following:-

- * 8 en-suite guest rooms
- * a reception area
- * a kitchen in the main building
- * a warehouse outside approximately 700sqm
- * a borehole with a 5,000L water tank
- * Manager's accommodation (en-suite)
- * spacious area outside for parking

Sale price: \$700,000 negotiable

* Please note that the sale price includes all beds, fridges, TVs, etc

Features

| Interior | | Exterior | | Sizes | |
|--------------|-----|----------|-----|-----------|---------------------|
| Bedrooms | 8 | Security | Yes | Land Size | 2,768m ² |
| Bathrooms | 8 | Pool | No | | |
| Kitchens | 1 | | | | |
| Recep. Rooms | 1 | | | | |
| Furnished | Yes | | | | |