



**Mwila Sheila Mulundika**  
+260979459259  
mwila.mulundika@seeff.com

Contact **Lusaka**

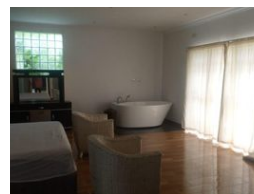
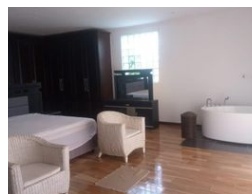
**+260 954152925**

Foxdale Court 114  
1st Floor, Second Building  
609 Zambezi Road  
Roma  
Lusaka  
10101

FEATURED



Web Ref RL994



**ZMW7,250,000**

2 2

**Monthly Bond Repayment** ZMW74,833.66

Calculated over 20 years at 11% with no deposit.

**Transfer Costs** ZMW666,728.00 **Bond Costs** ZMW75,285.00

These calculations are only a guide. Please ask your conveyancer for exact calculations.

### IDEAL FAMILY HOUSE WITH MODERN FEATURES

Spacious home with open plan flow and modern finishes. The kitchen's unique stone counter tops are a feature on its own. One of the en-suite bedrooms has an impressive layout with a unique and must-see bathtub. Easy access to surrounding suburbs and shopping malls

Sale Price \$250,000 (Kwacha equivalent)

### Features

Interior		Exterior		Sizes	
Bedrooms	2	Carports / Parkings	2	Land Size	1,150m²
Bathrooms	2	Security	Yes		
Kitchens	1	Pool	Yes		
Recep. Rooms	2				
Studies	1				
Furnished	No				