



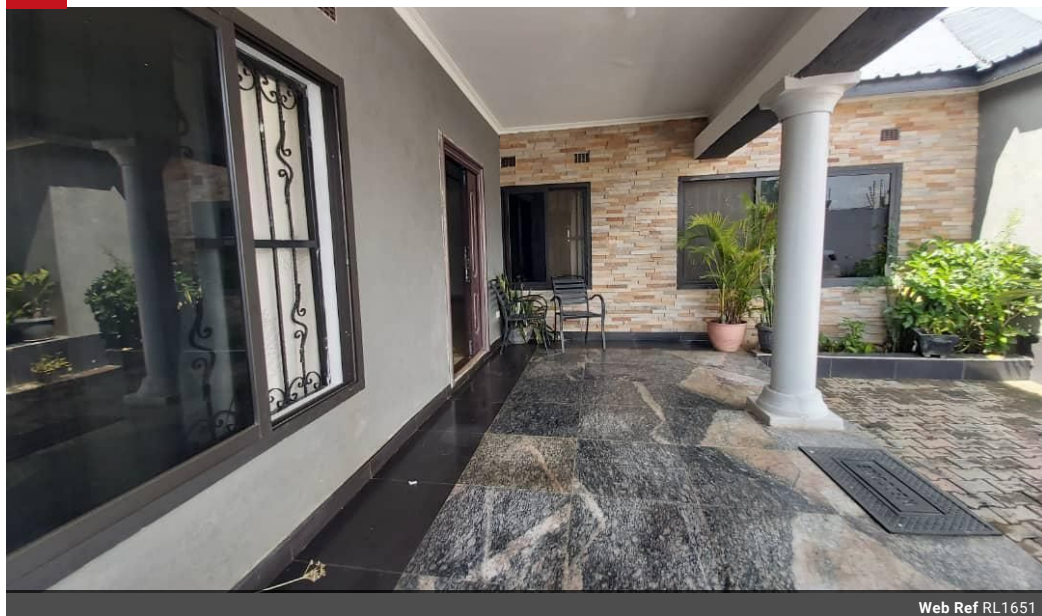
**Mwila Nakazwe**  
+260 973251706  
mwila@seeff.com

Contact **Lusaka**

**+260 954152925**

Foxdale Court 114  
1st Floor, Second Building  
609 Zambezi Road  
Roma  
Lusaka  
10101

NEW



Web Ref RL1651



**ZMW3,500,000**

 3  0

**Monthly Bond Repayment** ZMW36,126.59

Calculated over 20 years at 11% with no deposit.

**Transfer Costs** ZMW221,714.00 **Bond Costs** ZMW47,840.00

These calculations are only a guide. Please ask your conveyancer for exact calculations.

### Two Semi Detached Flats Available For Sale In Ibex Close To Ibex Hub & Spectra Filling Station

This well-appointed, spacious apartment block offers an excellent investment opportunity or the perfect setup for extended family living. Comprises, one 3bedroom apartment and one 2 bedroom apartment. Located in the desirable Ibex area of Lusaka, the property boasts close proximity to the vibrant Ibex Hub and its array of amenities. Borehole water. Total Plot size of 750sqm. Call now!!!

### Features

<b>Pets Allowed</b>	Yes				
<b>Interior</b>		<b>Exterior</b>		<b>Sizes</b>	
Bedrooms	3	Pool	No	Land Size	750m <sup>2</sup>
Recep. Rooms	2				