



Kelvin Mwansa
+260 969 627 085
kelvin.mwansa@seeff.com

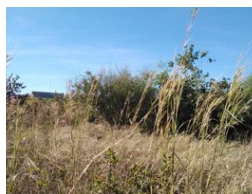
Contact **Lusaka**

+260 954152925

Foxdale Court 114
1st Floor, Second Building
609 Zambezi Road
Roma
Lusaka
10101



Web Ref RL39870



ZMW2,200,000

Monthly Bond Repayment ZMW22,708.14

Calculated over 20 years at 11% with no deposit.

Transfer Costs ZMW89,947.00 **Bond Costs** ZMW34,625.00

These calculations are only a guide. Please ask your conveyancer for exact calculations.

Prime Bare Land

Prime land located on Great East Road near Mount Meru Plant within Katuba Area. The land extent is 2.2 acres. Call for more details and viewing!!

Features