



Kelvin Mwansa
+260 969 627 085
kelvin.mwansa@seeff.com

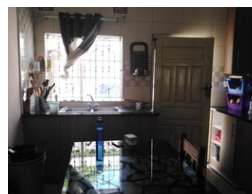
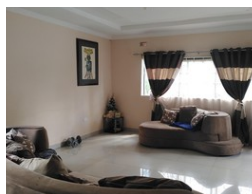
Contact **Lusaka**

+260 954152925

Foxdale Court 114
1st Floor, Second Building
609 Zambezi Road
Roma
Lusaka
10101



Web Ref RL638



ZMW1,800,000

🛏 2 🚿 1 🏠 1

Monthly Bond Repayment ZMW18,579.39

Calculated over 20 years at 11% with no deposit.

Transfer Costs ZMW61,039.00 **Bond Costs** ZMW30,875.00

These calculations are only a guide. Please ask your conveyancer for exact calculations.

Block of Flats

Neat Block of 3 flats for sale!

This is located in Lilayi near G-Greens Lodge.

Each flat has 2 bedrooms, open plan kitchen and living areas and communal bathroom.

The property has a plot size of 40X25 (960 sqm.).

All the services are connected.

Call now for more details and viewing arrangements!!

Features

Interior

Bedrooms	2
Bathrooms	1
Recep. Rooms	2

Exterior

Garages	1
Pool	No