



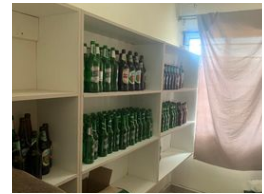
Kelvin Mwansa
 +260 969 627 085
 kelvin.mwansa@seeff.com

Contact **Lusaka**
 +260 954152925

Foxdale Court 114
 1st Floor, Second Building
 609 Zambezi Road
 Roma
 Lusaka
 10101



Web Ref RL1190



ZMW860,000

3 2 2

Monthly Bond Repayment ZMW8,876.82
 Calculated over 20 years at 11% with no deposit.

Transfer Costs ZMW28,244.00 **Bond Costs** ZMW21,450.00
 These calculations are only a guide. Please ask your conveyancer for exact calculations.

RESIDENTIAL PROPERTY FOR SALE

Located in the heart of Siavonga within Natinangala Area about 2.5 kilometres from the tarred Siavonga Road and approximately 5 kilometres from Siavonga Commercial Area.

The property has a land extent of 1176 (45.24 x 26.14) and is developed with the main house comprising of a spacious master ensuite bedroom, two additional bedrooms, an open concept living, kitchen and dining areas, laundry, pantry and a garage with parking space for two vehicles. The property is additionally developed with a one bedroom servant's quarter.

Well secured as the property is secured in a concrete block wall.

Asking price is ZMW 860,000.

Call for more information and viewing arrangements!

Features

Pets Allowed Yes

Interior

Bedrooms 3
 Bathrooms 2
 Recep. Rooms 2

Exterior

Garages 2
 Dom. Accom. 1
 Pool No

Sizes

Land Size 1,176m²