



Mwila Sheila Mulundika
 +260979459259
 mwila.mulundika@seeff.com

Contact Lusaka

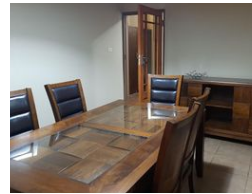
+260 954152925

Foxdale Court 114
 1st Floor, Second Building
 609 Zambezi Road
 Roma
 Lusaka
 10101

FEATURED



Web Ref RL942



ZMW45,000 pm

Lease Period Negotiable
 Annual Escalation -

Availability Immediately

Deposit -

4 3.5 2

IDEAL EXECUTIVE PROPERTY FOR RENT

Upmarket Executive house in a stellar location of Kitwe, well secured with trellidor retractable gates, surrounded by well maintained gardens, enclosed in a wall fence with electric fencing & (2) automated gates. The property is fully furnished with 4 bedrooms, 3 bedrooms en-suite, 1 bathroom, lounge, dining area, TV room, kitchen with in-built stove/oven, patio, swimming pool with entertainment area/bar, laundry room, genset and a water tank with borehole

Rental Price: \$2,500 (negotiable)

Features

Interior

| | |
|--------------|-----|
| Bedrooms | 4 |
| Bathrooms | 3.5 |
| Kitchens | 1 |
| Recep. Rooms | 2 |
| Furnished | Yes |

Exterior

| | |
|-------------|-----|
| Garages | 2 |
| Security | Yes |
| Dom. Accom. | 1 |
| Pool | Yes |