



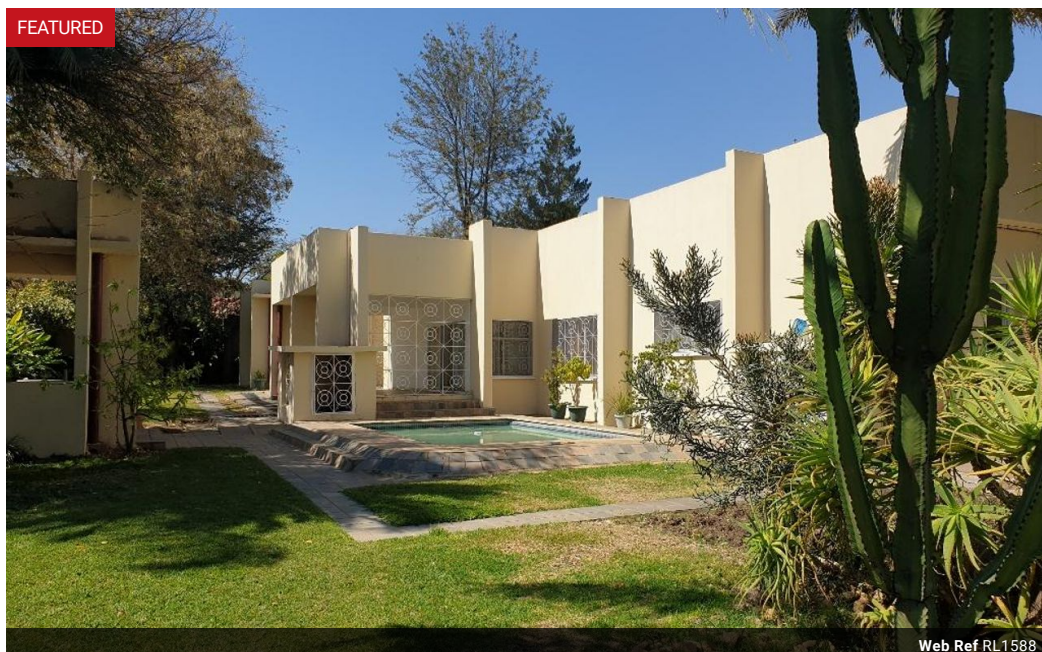
**Elvira Brentnall**  
+260968 336061  
elvira@seeff.com

Contact **Lusaka**

**+260 954152925**

Foxdale Court 114  
1st Floor, Second Building  
609 Zambezi Road  
Roma  
Lusaka  
10101

FEATURED



Web Ref RL1588



POA

**Lease Period** 24 months  
**Annual Escalation** -

**Availability** Immediately

**Deposit** -

 4  5  2

### Executive House Jesmondine

Available now - residential or commercial use:

An executive house in Jesmondine with  
4 spacious bedrooms, each en-suite and with walk-in closets  
Reception area  
Spacious fitted kitchen with large storage & separate laundry  
Dining room  
Sunken lounge with a large bar area  
Large patios - lounge & main bedroom  
Atrium with water feature  
Air-conditioned  
Entertainment area with swimming pool

Double garage  
Lots of storage space  
Big staff quarters  
Fish pond  
Borehole & council water supply

### Features

**Pets Allowed** Yes

#### Interior

Bedrooms	4
Bathrooms	5
Kitchens	1
Recep. Rooms	3
Studies	0.5
Furnished	No

#### Exterior

Garages	2
Carports / Parkings	3
Security	Yes
Dom. Accom.	1.5
Pool	Yes