

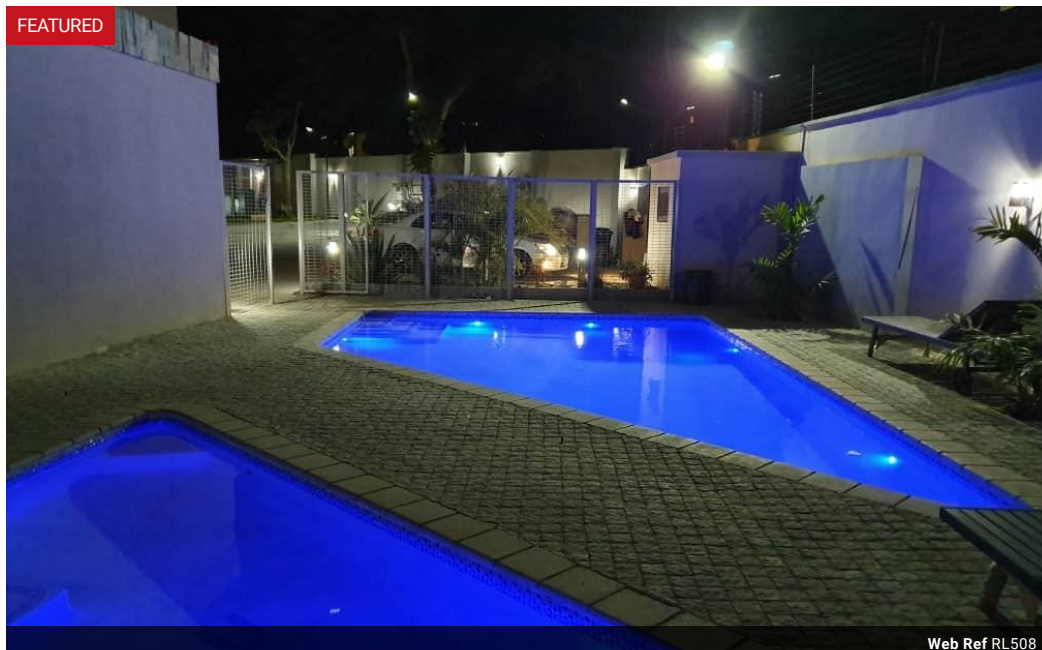


Elvira Brentnall
+260968 336061
elvira@seeff.com

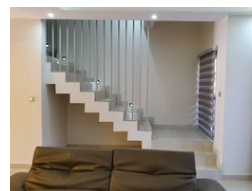
Contact **Lusaka**

+260 954152925

Foxdale Court 114
1st Floor, Second Building
609 Zambezi Road
Roma
Lusaka
10101



Web Ref RL508



POA

Lease Period 12 months

Availability
Immediately

Deposit -
Annual Escalation -

2 2

Neat & Furnished 2 and 1 Beds

Central location - in the heart of Rhodespark and close to International School of Lusaka.
Fully furnished modern apartments,
Maisonette style,
En-suite with balconies,
Air-conditioned,
Walk in closet - main bedroom,
Secure,
Can be fully serviced...
Swimming pool in complex,
Back-up generator.
Contact me for viewing arrangements

Features

Interior

| | |
|--------------|-----|
| Bedrooms | 2 |
| Bathrooms | 2 |
| Kitchens | 1 |
| Recep. Rooms | 2 |
| Furnished | Yes |

Exterior

| | |
|---------------------|-----|
| Carports / Parkings | 2 |
| Security | Yes |
| Pool | Yes |

Extras

Balcony Built-in Wardrobes Security Maid Service