



**Mwila Nakazwe**  
+260 973251706  
mwila@seeff.com

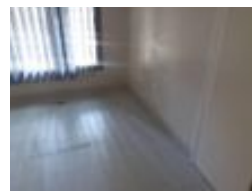
Contact **Lusaka**

**+260 954152925**

Foxdale Court 114  
1st Floor, Second Building  
609 Zambezi Road  
Roma  
Lusaka  
10101



Web Ref RL1541



**POA**

**Lease Period** Negotiable  
**Annual Escalation** -

**Availability** 01 May 2025

**Deposit** -

 8  6

### Standalone Houses For Rent As offices In Rhodespark Near Great East Road

Located a few metres off Great East road, the property comprises 3 buildings, Main building- (5 offices), two toilets, Spacious cottage with partitioned offices, two toilets, second cottage-spacious with two toilets, plus external toilet, ample parking. Asking Price \$4000.Call for more details.

### Features

#### Interior

Bedrooms	8
Bathrooms	6
Recep. Rooms	3
Furnished	No

#### Exterior

Carports / Parkings	3
Pool	No